

SEIREI GAKUEN

EDUCATIONAL ORGANIZATION



- The History of the Seirei Gakuen Educational Organization (SGEO)
- Milestones of SGEO
- Educational Environment of SGEO
- Seirei Christopher University (SCU)
- Seirei Christopher University College of Care Work
- Seirei Christopher High School (SCHS)
- Seirei Christopher Kodomoen
- Seirei History Museum and Seirei Group
- Access map



SEIREI CHRISTOPHER UNIVERSITY



SEIREI CHRISTOPHER UNIVERSITY
COLLEGE OF CARE WORK



SEIREI CHRISTOPHER HIGH SCHOOL



SEIREI CHRISTOPHER KODOMOEN
Center for Early Childhood Education and Care

学校法人 聖隷学園

Origin of Symbolmark

It is written in the Bible, John 13, that at the Last Supper, Christ poured water into a basin, then he washed the feet of his disciples. This was considered to be the work of slaves. After he finished, Christ told his disciples that they must wash one another's feet just as he did. He practiced his doctrine for his disciples. The origin of the name "Seirei" which means "holy servant" or "one who serves God" comes from here. The outer doubled circles found in the Seirei symbol symbolizes such a basin used for washing feet. There are three colored circles in the center of the Seirei symbol. The red circle represents medicine, the green, welfare, and the blue, education. The cross found in the center of the three overlapping circles represents Christianity, the very basis of Seirei's philosophy. Everything at Seirei was started from the church. In 1980 Dr. Albert Atwell, who served at Seirei from 1978 to 1981, designed Seirei's symbol.

THE HISTORY AND AIM OF THE SEIREI GAKUEN EDUCATIONAL ORGANIZATION (SGEO)

The Seirei Gakuen Educational Organization (SGEO) cultivates service to humanity and professional expertise based in the embodiment of its founding philosophy: "Love Thy Neighbor."

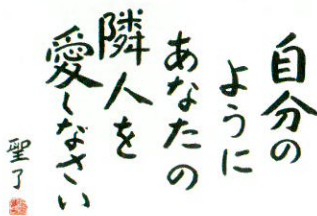


Founder
Tamotsu Hasegawa
(1903~1994)



Chairman
Ryo Hasegawa

Founding Philosophy
"Love Thy Neighbor"



The educational efforts of SGEO formally began in 1949 when the Enshu Christian School was established in Hamamatsu with the same underlying philosophy. Tamotsu Hasegawa, the founder of Seirei, established the school on the notion that, "Japan's postwar reconstruction will be meaningless without the spiritual restoration of the youth, anchored in education."

Facing a shortage of nurses after World War II, Tamotsu Hasegawa started to provide nursing education to meet the demands of society. The Enshu Christian School later changed its name to Seirei Vocational school of Practical Nursing as a result. This was the starting point of nursing education that is still the hallmark of today's Seirei Gakuen Educational Organization.

Once enrollment grew sufficiently, a nursing course in the Seirei Gakuen High School was begun. In time, the high school curriculum shifted to a comprehensive general education program, responding to the social needs of that time. This is what forms the Seirei High School program of today.

In 2009, we opened the Seirei Christopher Junior High School. The goal of the junior high school is to foster a well-rounded character in our students and to seek academic development over the course of the 6-year program in lower- and upper-secondary school education. Both the junior and senior high schools aim to create an engaging institution to meet the demands of society, while also allowing students to carry out their academic aspirations based on improved teaching methodologies and a high-quality educational environment.

Tamotsu Hasegawa also foresaw the era of advanced medical treatment and opened the Seirei Gakuen Junior College of Nursing in 1969. In 1992, Tamotsu Hasegawa founded the Seirei Christopher College of Nursing to train nurses who would possess advanced knowledge, skills, and an attitude of service to others. The college went on to add academic departments and ultimately to become the Seirei Christopher University (SCU).

In 1998, the Seirei Christopher College of Nursing began offering a Master's program through the School of Nursing. Given the aging Japanese population, and with an eye on treating illnesses, injuries, and addressing social issues related to an aging society, the Schools of Social Work and Rehabilitation Sciences were opened in 2002 and 2004, respectively. With the introduction of these final academic departments, SCU completed its educational facilities, encompassing almost all aspects of healthcare and social work.

In addition, in 2008, a Bachelor's program in Child Education and Social Work was established. This program, along with all the other efforts of Seirei Gakuen Educational Organization, strengthens our commitment to our obligation to work closely with professionals in all medical fields and to cultivate graduates who protect life and the well-being of each and every member of our community.

Finally, SCU nurtures the creation of professionals of the highest caliber as a general university with both Master's and PhD programs in the nursing, rehabilitation, and social welfare fields.

In 2011, SGEO also opened a preschool of early childhood education and care called Seirei Christopher Kodomoen. Reflecting an era of declining birthrates and an increasing number of households with both parents working, SGEO thinks that integrating kindergarten and nursery school was inevitable. Seirei Christopher Kodomoen contributes to the local community as a preschool for early childhood education and care, serving both needs.

In 2016, SGEO opened the Seirei Christopher University College of Care Work. This was in response to the growing social need for care of the elderly, assisting them to live a full and dignified life. We train certified care workers in a two-year program. We teach them to care for the elderly in a caring and kind manner.

SGEO's newest ambition is to establish Seirei Christopher Medical School. Rather than being a conventional College of Medicine, SGEO envisions creating a graduate school to nurture medical students on their path to becoming qualified doctors. A shortage of medical doctors is a serious social issue; however, it is important to identify students who have a clear sense of purpose, as well as the academic capability to train as doctors. SGEO is pursuing further development, including revision of enabling legislation, with the aim of establishing such a facility in Japan in the near future.

SGEO has a long history of anticipating societal changes and social movement and has always worked towards addressing the needs of the broader community. Furthermore, SGEO will continue to devote itself to its students so that we may achieve the realization of a new educational model that focuses on reforming society in order to promote the practice of healthcare and social work as well as improving their quality of our graduates. We will continue to seek to cultivate professionals who care about life and the well-being of each and every member of the community.

In the beginning was love.
The history of SGEO began with "Love Thy Neighbor" at its foundation.

In 1930, a needy young man suffering from tuberculosis came to visit some Christians in Hamamatsu to ask for help. These young Christians, one of whom was our founder Tamotsu Hasegawa, invited him to the humble hut where they lived and gave him good nursing care. The history of Seirei group started from this humble hut.
Within each of its educational fields, SGEO has always promoted the biblical philosophies of "Love Thy Neighbor" and "Dignity of Life," as it continues to today.

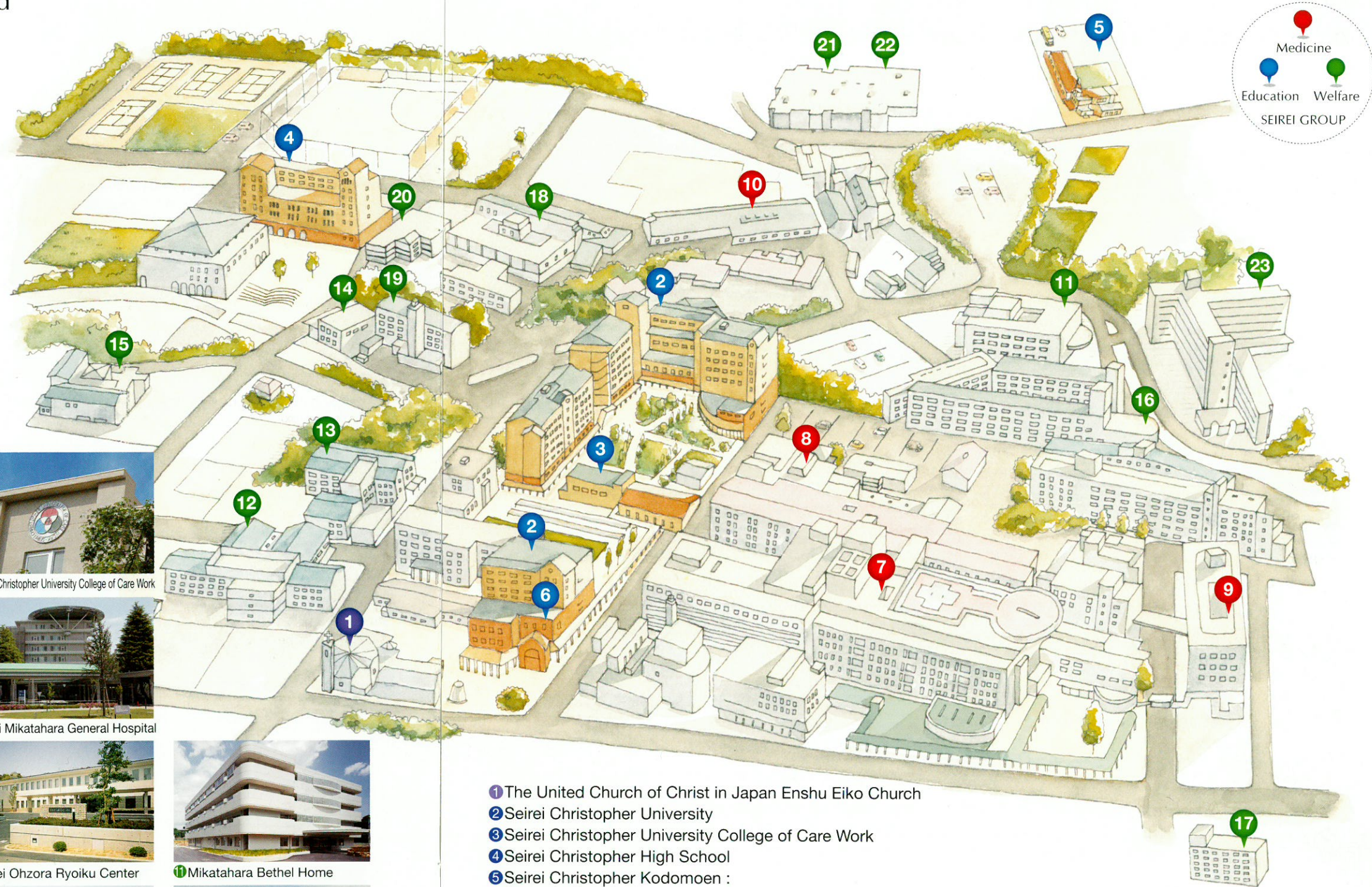
1930	The founder, Tamotsu Hasegawa, and his fellow Christians started to take care of tuberculosis patients.	
1949	Enshu Christian School was established.	
1952	Enshu Christian School changed its name to Seirei Vocational School of Practical Nursing.	
1959	Seirei Vocational School of Practical Nursing changed its name to Seirei School of Practical Nursing.	
1966	"Seirei Gakuen Educational Organization(SGEO)" was established. Seirei Gakuen High School that offered a Nursing Course was established.	
1969	Seirei Gakuen Junior College of Nursing was established for the Seirei Gakuen high school graduates.	
1974	The Nursing Course in Seirei Gakuen High School was redesigned as a general education program.	
1978	School for Welfare and Medical Assistance was established.	
1980	A Midwifery Course was opened in Seirei Gakuen Junior College of Nursing.	
1988	Seirei Training School of Care Work was established.	
1992	Seirei Christopher College of Nursing was established along with a School of Nursing.	
1998	A Master's Program in the School of Nursing was opened in Seirei Christopher College of Nursing.	
2001	Seirei Gakuen High School changed its name to Seirei Christopher High School.	
2002	Seirei Christopher College of Nursing changed its name to Seirei Christopher University and opened a School of Social Work. (Seirei Training School of Care Work was dissolved and absorbed into the new School) Seirei History Museum was established.	
2003	The High School campus was moved and rebuilt in its present location.	
2004	A School of Rehabilitation Sciences and a Master's Program in the School of Social Work were opened in Seirei Christopher University.	
2006	An Advanced Course was established in Seirei Christopher High School. A Master's Program was opened in the School of Rehabilitation Sciences.	
2007	A Midwifery Course was opened in Seirei Christopher University.	
2008	A School of Health Sciences that offers PhD Programs was opened. Bachelor's Program in Child Education and Social Work was opened in the School of Social Work.	
2009	Seirei Christopher Junior High School was opened.	
2011	Seirei Christopher Kodomoen was established. Graduate Programs in the School of Nursing, Rehabilitation Sciences and Social Work were restructured into Master's and PhD Programs, respectively.	<p>A new building was added.</p>
2016	Seirei Christopher University College of Care Work was established.	

Educational Environment of SGEO

More than 20 educational, medical, and welfare facilities of Seirei group are assembled at the birthplace of Seirei

SGEO is located in the area called Mikatahara, where more than 20 facilities of Seirei group are located. This area was acquired by the Two-Tatami-Mat Land Donation Campaign supported by a nationwide Christian network in an effort to care for patients of tuberculosis which was believed to be an incurable disease at that time. Seirei group has been always respected and practiced the Christian philosophy of "Love Thy Neighbor."

Being a part of SEIREI, students gain lots of valuable life experience on a daily basis by associating with those who are ill, socially vulnerable, children and the elderly. As the symbol of Seirei group, Enshu Eiko Church peacefully stands by the campus of Seirei Christopher University.



1 Enshu Eiko Church



2 Seirei Christopher University



3 Seirei Christopher University College of Care Work



4 Seirei Christopher High School



5 Seirei Christopher Kodomoen



7 Seirei Mikatahara General Hospital



8 Seirei Hospice



9 Seirei Yobo-Kenshin Center



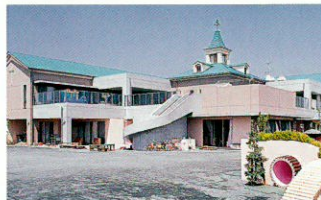
10 Seirei Ohzora Ryoiku Center



11 Mikatahara Bethel Home



12 Seirei Kouseien Shinseiryō



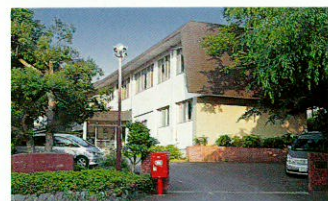
15 Seirei Kodomoen Wakaba



16 Hamanako Eden-no-sono



17 Mokuseinosato



18 Hamamatsu Jyujinosono



19 Adonai-Kan



21 Mikatahara Square



23 Hamamatsu Yu-yu-no-sato

- 1 The United Church of Christ in Japan Enshu Eiko Church
- 2 Seirei Christopher University
- 3 Seirei Christopher University College of Care Work
- 4 Seirei Christopher High School
- 5 Seirei Christopher Kodomoen :
Center for Early Childhood Education and Care
- 6 Head Office of Seirei Gakuen Educational Organization
- 6 Seirei History Museum
- 7 Seirei Mikatahara General Hospital
- 8 Seirei Hospice
- 9 Seirei Yobo-Kenshin Center : Medical Checkup Facility
- 10 Seirei Ohzora Ryoiku Center :
Treatment and Education Center for the Severe Disabilities
- 11 Mikatahara Bethel Home : Elderly Nursing Care Facility
- 12 Seirei Kouseien Shinseiryō : Care Facility for Persons with Disability
- 13 Seirei Kouseien Saneiryō : Care Facility for Persons with Disability
- 14 Seirei Kouseien Narudo-Kobo : Care Facility for Persons with Disability
- 15 Seirei Kodomoen Wakaba :
Center for Early Childhood Education and Care

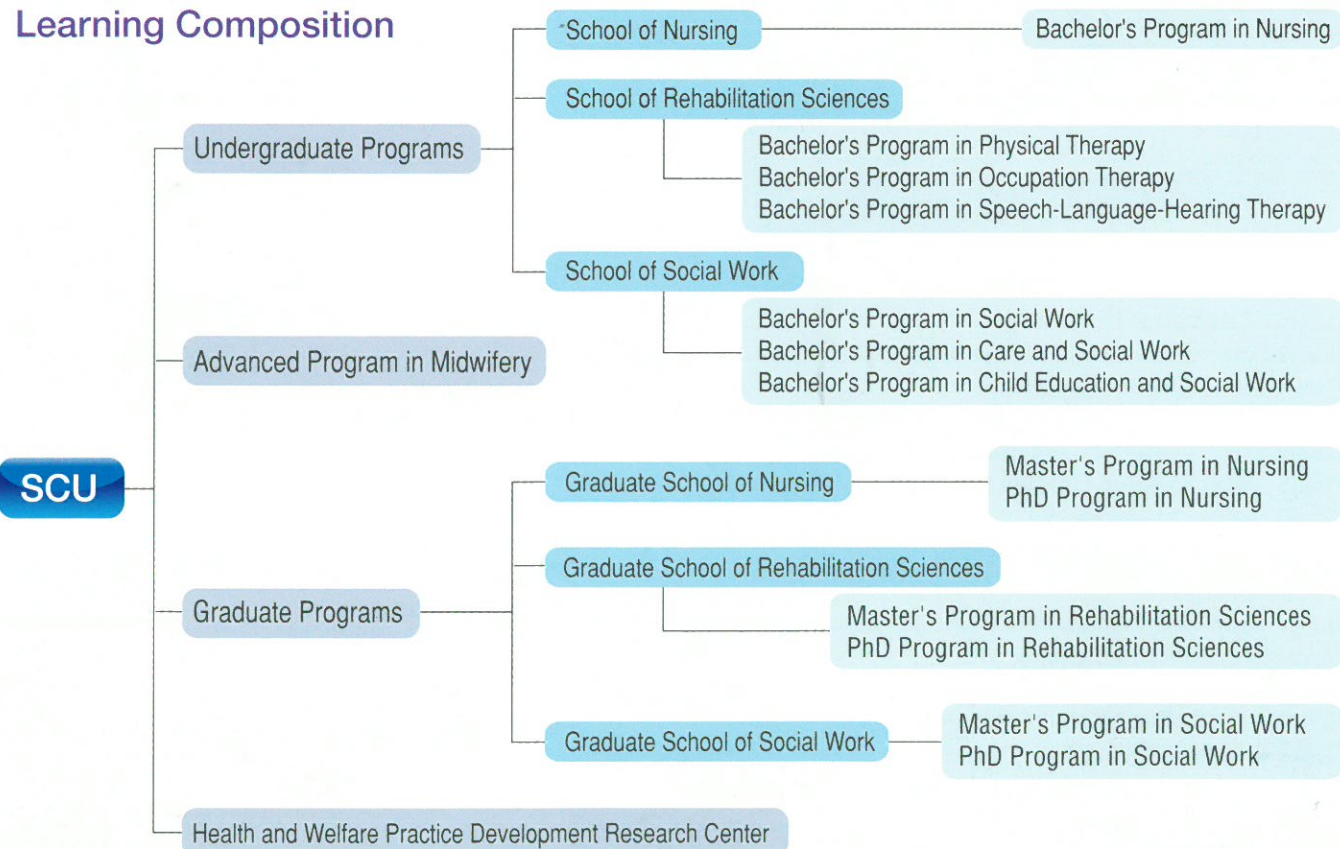
- 16 Hamanako Eden-no-sono : Senior Residence
- 17 Mokuseinosato :
Care Home for the Elderly
- 18 Hamamatsu Jyujinosono :
Special Nursing Home for the Elderly
- 19 Adonai-Kan :
Care Home for the Elderly
- 20 2nd Adonai-Kan :
Care Home for the Elderly
- 21 Mikatahara Square :
Home for Children with Intellectual Disabilities
- 22 Mikatahara Square :
Home for Adults with Intellectual Disabilities
- 23 Hamamatsu Yu-yu-no-sato :
Care Home for the Elderly

We nurture students to gain professional expertise in the areas of healthcare and social work, embracing the dignity of life and the philosophy of "Love Thy Neighbor."

Based on the principles of SCU "Love Thy Neighbor" and "Dignity of Life", since its inception, SCU has helped nurture professionals with not only the relevant knowledge and skills, but also passion for hands on practice in the fields of healthcare and social work based upon biblical foundations. Philosophy and history as well as the principles of Seirei are compulsory areas of study for all students enrolled in the School of Nursing, the School of Rehabilitation Sciences and the School of Social Work. With a view to realizing their respective future professions, students initially pursue their studies in fundamental courses before progressing into more specialized courses. Students also learn the meaning, importance and way of "Inter-Professional Working", a corporative method among specialists in different fields working as a team, while pursuing the higher level of their specialty studies. Students are able to acquire practical skills through practice at Seirei's extensive facilities which share the same Christian ethics and provide optimal learning opportunities. The ultimate educational objective of SCU is to develop students who will go on to become healthcare professionals and in turn, provide care through the ethic of "Neighborly Love" and have compassion for the pain of others as well as a passion for working with those in other healthcare and social work professions, both at home and abroad.



SEIREI CHRISTOPHER UNIVERSITY Learning Composition



SEIREI CHRISTOPHER UNIVERSITY

School of Nursing Bachelor's Program in Nursing First year Enrollment Limit: 150

Seirei Christopher University (SCU) holds that the most fundamental skill and spirit of nursing is to protect the dignity of life and to show love to those who need help. The SCU nursing program emphasizes the sensibility to understand the feelings of people in need of medical care, human nature, and the joy of life. The program emphasized critical thinking skills with an emphasis on thinking across disciplines and thinking objectively. SCU nursing graduates must also demonstrate a mastery of nursing skills and knowledge. Seirei seeks to train nurses who have mastered the discipline and who aim to practice skilled nursing with a warm heart.



School of Rehabilitation Sciences

Bachelor's Program in Physical Therapy First year Enrollment Limit: 40

The Seirei Physical Therapy (PT) Department of the School of Rehabilitation Sciences trains Physical Therapists to work with patients who have challenging illnesses or injuries which have led to loss of independence in their daily lives. Our Physical Therapists, with great sympathy and commitment of the heart, work with patients who have experienced loss of the ability to sit, stand, walk, etc. At the same time, Seirei PTs seek to develop in our patients, positive feelings in order to help prevent further physical deterioration of their disability. We train Physical Therapists who are committed to supporting exercise therapy based on scientific evidence which supports an independent daily life for their patients.



Bachelor's Program in Occupation Therapy First year Enrollment Limit: 30

The Seirei Occupational Therapy (OT) Department of the School of Rehabilitation Sciences trains Occupational Therapists who are committed to restoring the daily living skills and functions that are a part of independent living. Our Occupational Therapist are committed to overcoming disabilities of the body and mind using the most advance scientific approaches and skills. At Seirei Christopher University we seek to educate Occupational Therapists to achieve the highest level of critical thinking in their clinical practice, and who have a calm judgement, and who are skilled at developing and implementing therapeutic plans which alleviate human pain and restore quality of life.



Bachelor's Program in Speech-Language-Hearing Therapy First year Enrollment Limit: 25

The Seirei Speech Therapy (ST) Department of the School of Rehabilitation Sciences emphasizes education and conducts research to maintain and improve speech, language, and hearing functions so that people with communication difficulties can both communicate and eat with no loss of their individual dignity. Through education, our students learn to support patients in building a richer life. At Seirei Christopher University, we train Speech, Language, and Hearing professionals who develop a rich and deep understanding of human nature. Our graduates are highly skilled at working in the most creative and effective ways possible with the patients who present themselves for therapy.



School of Social Work

Bachelor's Program in Social Work First year Enrollment Limit: 40

Society faces many difficulties such as children's poverty, young-people who are "shut-ins," individuals who are isolated by disabilities, and the many challenges faced by senior citizens in a rapidly aging society. The Seirei School of Social Work seeks to develop graduates who will support these citizens-in-need and who will work to address these problems and help to build a better society. The Seirei School of Social Work's response to these challenges is to train Social Workers who will not only be active in the social welfare sector, but who will also excel in the medical, educational, judicial, and regional support fields.



Bachelor's Program in Social Work First year Enrollment Limit: 25

In the Seirei Christopher University Care Work program, students learn both the theories and practical skills to serve and support people with disabilities, as well as the family who serve as caregivers in everyday life. The Seirei program nurtures our graduates to become Care Worker professionals who support others in living a happy life. This is done through students mastering specialized knowledge and skills in addition to developing empathy for those members of humanity in need. This is the foundational value of all of Seirei.



Bachelor's Program in Child Education and Social Work First year Enrollment Limit: 40

A key social problem is that family stress has greatly increased. This leads to an unhealthy family environment, child-raising anxiety, and even child abuse. In addition to high quality education, high quality and affordable childcare, and high quality education for children, families also need support for parents. This calls for highly qualified and responsible professionals who can take responsibility for creating a nurturing environment in which healthy children can be raised. In the Child Education and Social Work department our goal is to nurture professional leaders who can comprehensively support the creation of healthy and safe environments in which to raise children.



Advanced Program in Midwifery

Enrollment Limit: 15

The Advance Program in Midwifery is designed for professionals who want to become Midwives and enter this service sector. This program is truly designed in the spirit of love for one's neighbor. Our Advance Midwifery program is based on a deep belief in the inner power of women, faith in women, their strength, and the centrality of their love for family and the wonder of the "life cycle." The Seirei Advanced Midwifery program cultivates professionals who place their emphasis on care and support. In addition to the educational goals of developing graduates with judgement, world-class education, and practical skills, we emphasize the ability to continue to deliver care to women, their families, and their children. This program nurtures the central concept of the ability of women to promote women's rights and the anonymous role of the midwife. We nurture the ability of our graduate to act as professionals in an independent manner.



GRADUATE PROGRAMS

Master's Programs 2 years (3 years for long-term school course)

PhD Programs 3 years (4 years for long-term school course)

Our masters and doctoral courses in nursing, rehabilitation sciences, and Social Welfare aim to cultivate highly qualified world-class professionals. These post-graduate courses offer the most advanced graduate-level research opportunities and focus on the broadest range of academic development. Our programs are flexible and we are able to address a wide range of academic and research interests.



Master's Program in Nursing Enrollment Limit: 10 / **PhD Program in Nursing** Enrollment Limit: 5

The Seirei Christopher University graduate nursing programs address the need for professionals with greater skills in the face of accelerating sophistication and specialization in the field of nursing. Our masters and PhD programs in nursing address four fields of study: environmental support nursing, life support nursing, medical support nursing, and family support nursing. In 2015, the Master's program was accredited and includes courses such as cancer nursing and advance practical nursing. The doctoral program is a highly specialized course for nursing professionals and is focused on multi-sectoral collaboration. Students work on searching for and developing methodologies to improve the quality of life (QOL) for patients in response to their real-world needs.

Master's Program in Rehabilitation Sciences Enrollment Limit: 10 / **PhD Program in Rehabilitation Sciences** Enrollment Limit: 5

As the composition of our society and population change, we also need health care and social welfare reform. The practice of Rehabilitation sciences becomes equally complex and diversified and requires the same degree of change and development. The Seirei Christopher University Graduate School of Rehabilitation Science consist of three fields: Physical Therapy, Occupational Therapy, and Speech, Language, and Hearing Therapy. In order to contribute to the social and medical demands of a rapidly changing society, our Rehabilitation Science courses also develop in specialization and related fields. Graduates learn critical thinking skills, problem solving, and deepening of their specialized knowledge. Our graduates develop into highly qualified professionals with outstanding communication skills and refined research capabilities.

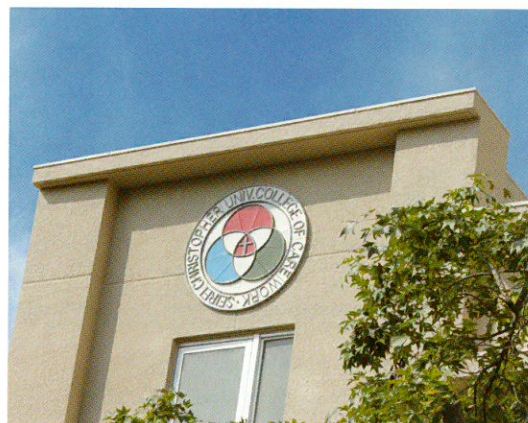
Master's Program in Social Work Enrollment Limit: 10 / **PhD Program in Social Work** Enrollment Limit: 3

There have been significant changes in both peoples' awareness of social welfare and in the accompanying social and economic circumstances across society. It is expected that social welfare service must cover peoples' entire lives and plays a significant role in helping individuals maintain social stability and wellbeing. The programs of the Seirei Christopher University Social Welfare Graduate School are the first to have been developed in Shizuoka Prefecture and remains the only graduate school focused on social welfare, child and family welfare, and nursing care welfare. These graduate programs reconcile the fields of social welfare and professional education. Our programs also advance professionals who play key roles in seeking the integration of these fields, while at the same time pursuing higher levels of specialty.



We train our students to become certified care workers who are able to use the principle of "Love Thy Neighbor" to accomplish the goal of helping members of our super-aged society live long fruitful lives with dignity.

Seirei Gakuen Educational Organization (SGEO) opened the Seirei Christopher University College of Care Work in 2016. Our goals of our intensive two-year program include responding to current social needs, to meet the increased demand for highly skilled and certified care workers, and to send out certified care workers into the community. Building on the underlying characteristics of nursing care education, which has been implemented for many years at SGEO, we provide human-focused education that integrates knowledge, skills, and values, with the philosophy of nursing care and the underlying SGEO spirit of "Love Thy Neighbor." This means we train certified care workers to treat patients as they themselves would like to be treated.



The Care Work Department : Enrollment capacity is 40 people

Education Goals

1. The Seirei College of Care Work nurtures students to acquire the values of neighborly love. These values, based on Christian principles, encourages students to deepen their self-understanding, deepen their personalities, improve their relations with others, and nurture their understanding of human nature.
2. The Seirei College of Care Work seeks to graduate students who have mastered the discipline of Social Care Work as a whole, who have acquired the knowledge necessary to be a professional care worker, and who will be able to apply care work that is scientific in its basis and focuses on empathy for the patient's life as a whole.
3. The Seirei College of Care Work seeks to graduate students who understand themselves and have acquired the communication skills necessary to create constructive relationships with the people around them.
4. The Seirei College of Care Work graduates will understand how our social experiences are related to the practice of social work and will always have an interest in the community and its welfare.
5. The Seirei College of Care Work graduates will understand their role as members of the medical welfare team. They will also seek to fulfill their responsibilities as care workers through cooperation and collaboration with the entire healthcare team.

Four Features

Education at the University Level

College of Care Work Students share the rich learning environment of the overall university. In addition, many faculty members of the university, graduate school, and vocational school present lectures in the college. With a sophisticated and comprehensive curriculum and constant academic support, the College of Care Work trains students who will operate at the core of long-term care welfare and who will gain the highest levels of knowledge and skills.

Diversity of Courses

The College of Care Work nurtures the students' desire to learn. We provide students who aim to deepen their knowledge and understanding with opportunities to be involved in the school of Social Welfare, as well as in the overall university community. This inclusive approach lays the foundation for future enrollment in graduate school programs and encourages life-long learning.

Substantial Economic Support

We offer our students the most important financial assistance possible by offering the most affordable tuition in nursing welfare at any vocational school in Shizuoka prefecture. We also offer two scholarships from Seirei Social Welfare Community and a neighboring social welfare corporation.

Rich Employment

Students are able to envision and realize both their academic and professional goals with deep confidence since many Seirei Christopher Educational Organization graduates are involved and have also taken on leadership roles in nursing care practices in many of the welfare facilities in the region.



Cultivating a willingness to learn and promote the unique Seirei education based on the Christian philosophy of "Love Thy Neighbor"

Guided by the Seirei philosophy of "Love Thy Neighbor as Yourself," we enhance the education of the mind and nurture students to become future leaders and productive member of our global society. This is done over six years of lower and upper secondary school education. We also strive to develop every student's spiritual and physical strength along with essential knowledge, guided by a comprehensive educational plan. Not only do students have opportunities to think about how they should act as human beings, but they will also improve their sensitivity and character through an everyday morning service and work experience which will lead to them being leaders and productive future members of our global society. Through a student exchange program which started more than thirty years ago between Seirei Christopher High School and high schools located mainly in the United States, the program has nurtured students to become professionals active in the various fields of healthcare and social work. This includes doctors, nurses, rehabilitation workers, as well as social workers with both international sensibilities and broad world views.



OUR AIMS

To nurture students to become future leaders with high aspirations and to become productive members of global society based on our school's philosophy of "Love Thy Neighbor."

Students will:

1. To be eager to learn and be ambitious about achieving personal goals.
2. To embrace humanitarianism and become people who take great heed of work which makes life better for others: "Service above Self" (Shared Education and coexistence)
3. To have a broad global perspective. (International Understanding)
4. To have a strong passion to contribute to society as a future leader. (Contribution to Others)

SEIREI CHRISTOPHER JUNIOR HIGH SCHOOL

Enrollment Limit for First-Year Students: 70 (2 classes) Total Admission Capacity: 210

Unique Curriculum

Educate to foster a well-rounded character and seek academic development over the course of 6 years of lower and upper secondary school education.

To Nurture the Christian philosophy of "Love Thy Neighbor"

Students have opportunities to think about how they should act as human beings by way of daily morning Bible study and work experience. Also, we nurture students to have a sense of humanity through respecting others as well as themselves. Food, environment, and social work are themes for work experience. There are many opportunities for students to understand these core themes and values.

To Cultivate a Sense of Independence

We emphasize learning using the five senses through studying, experiences, and encouraging students' own initiatives. Also, we nurture students to have a positive learning attitude and to take an interest in their education.

To Promote Career Education

Students themselves organize a Seirei expedition, researching and exploring the nearby facilities of the Seirei Group, including Seirei Christopher University (SCU), our general hospital, and facilities for the elderly and disabled. Students also have opportunities to interact with healthcare professional and professors of SCU through numerous seminars and applied and experienced-based programs. Career education is a significant part of students envisioning their professional future.

Cultivating Performance and Independence

Immersion Program

In our Immersion Program, students are taught subjects in English. For this school, physical education and music classes are involved in the Immersion Program. Students will be immersed in English in these classes and they will concurrently take standard English classes.

Expanding Our Student's Future through English Mastery

There is an English Recitation Competition for students in Years 7 & 8, and an English Speech Competition in Year 9. Additionally, through interaction with foreign students, the school concentrates on English education to nurture professionals who are active in various fields both at home and abroad.

Overseas Study Visit

Students in Year 9 participate in English-camp for two days during summer vacation and visit an English-speaking country (New Zealand) in November in order to explore cultural differences. Students will do a research presentation upon returning home.

Cultural Exchange with Asian Rural Institute (ARI)

ARI is a vocational school in Tochigi Prefecture which has been offering a program related to self-sufficient farming mainly for local rural-community leaders from Asia and African countries. Our school and ARI exchange students every year for a workshop. This enables students to gain in-depth experience of other cultures as well as to understand the meaning of "work" and "contribution."

SEIREI CHRISTOPHER SENIOR HIGH SCHOOL

Advanced Course (co-ed) / Enrollment Limit for First-Year Students: 94 Total Admission Capacity: 282
Comprehensive Course (co-ed) / Enrollment Limit for First-Year Students: 200 Total Admission Capacity: 600

Unique Curriculum

Learn the Philosophy of Christianity and Improve Intelligence.

Immersion Program

In our Immersion Program, students are taught subjects in English. Our Immersion Program teaches both Physical Education and Music in English.

International Exchange

To acquire international acumen and practical linguistic ability, we provide interested students with a 3-month English language study curriculum and a longer-term, one-year study abroad program at sister school in the U.S. We also actively accept foreign students for abroad to foster an active international exchange.

Collaboration with SCU

The school offers a program called the "Ko-dai Renkei Program" in which academic staff at Seirei Christopher University talk about numerous topics related to healthcare and social work with students who seek to become healthcare professionals. Students are able to learn what to expect as healthcare and social work professionals while in school and this is one the unique features of Seirei.

Integrated Learning to Enrich the Sense of Humanity

Through services in daily morning Bible study, students have opportunities to think about how they should act as human beings.

Advanced Course

This course aims to educate students in becoming responsible leaders who devote themselves to bettering others' lives, through service careers such as healthcare and social welfare, with a passion for helping others. Students are encouraged to work globally with abundant knowledge and a keen understanding of humanity. While at school, students follow an academic curriculum that emphasizes math and science, along with a good command of English as a foreign language. The curriculum prepares students to pursue success at competitive public and private universities including schools of Medicine, Dentistry, and Pharmaceutical Sciences.

Comprehensive Course

Seirei Christopher High School offers 2 different types of curricula in the Comprehensive Course. We refer to these as "Special University Preparation" and "University Preparatory Courses."

Special University Preparation

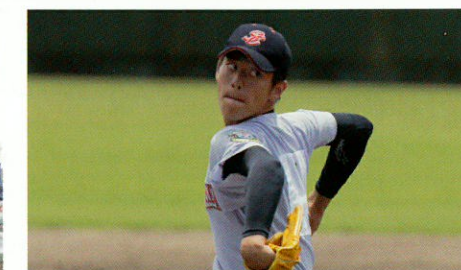
This course is designed to motivate and prepare students to pursue higher education at a public or private 4-year university in Japan. Math and English as a foreign language are taught using a proficiency-dependent based method. Students are required to participate in a special summer seminar, as well as attending compulsory Saturday classes. Students have the opportunity to participate in a variety of extracurricular activities after school.

University Preparatory Course

To prepare students for a local public or private 4-year university in Japan, the school strives to provide detailed yet efficient academic instruction for each student, as well as a variety of elective classes.



A new "Seminar House" was added in 2016 with the aim of fulfilling the goal of a more perfect educational system.



SCK fosters the healthy growth of body and mind of each and every child based on Christianity.

Kodomoen is authorized as a preschool which integrates both a kindergarten and a nursery school. It is able to draw out the best of kindergartens and nursery schools and plays both roles. SCK considers the nurturing of a child's self-affirmation to be a fundamental of childcare. In addition, the aim of SCK is to raise each and every child comprehensively and robustly by exposing them to a variety of real-world outdoor and nature experiences.



Fundamental Policy

1. Wishing every child of SCK has the spirit of love in the Bible. "Love your neighbor as yourself" is the philosophy of Seirei. The aim is to derive joy and pleasure from living together with people and to nurture the ability to get involved with others, as well as to grow up in a vibrant manner and to exert sufficient inner power while living the precious life that God has given to each and every person.
2. From the viewpoint of continuous development and learning, SCK comprehensively and innately advances preschool education and childcare for the transition to elementary school. The aim is to learn the basics of "Zest for Living" According to contents of education-childcare guideline for Centers for Early Childhood Education and Care.
3. SCK enhances childcare support for parents and the local community. It tries to improve the childcare environment while collaborating with people in a variety of fields so that everyone can help raise children and share in the joy.
4. As SCK belongs to Seirei Christopher University(SCU), it conducts active research to solve various issues surrounding infants and young children as well as to improve the quality of childcare in collaboration with faculty members of SCU. The results are released in order to make a childcare program a model for preschool education and the childcare field.



Aims of SCK

- Love** To let children care about themselves by realizing that they are loved by God and the people around them.
- Charity** To foster compassion through interaction with the people and to learn the joy of living together.
- Strength** To nurture children to have sensibility and a sound mind and body while playing in a natural environment.
- Life** To appreciate that our lives are dependent upon and are sustained by shared food related experiences.
- Expressiveness** To foster the ability of thinking as well as expressing by learning to meet various challenges through their own initiatives.
- Independence** To foster the ability to understand what is needed to live and learn these requirements individually.

Capacity

by April 1	0-year-old	1-year-old	2-year-old	3-year-old	4-year-old	5-year-old	Total
Children who are certified as No. 1 (formerly kindergartener)		—		45	45	45	135
Children who are certified as No. 2 and 3 (formerly nursery school child)		45		15	15	15	90
Kodomoen Total		45		60	60	60	225

SEIREI HISTORY MUSEUM and SEIREI GROUP

The Seirei, living with those who need help as a "Holy Servant."

The museum embodies the origin of the philosophy of Seirei which is "Love Thy Neighbor" and it introduces the history of how Seirei has practiced this philosophy. It is a place for all people who relate to Seirei, its staffs, and the community to attain a deeper understanding of Seirei.

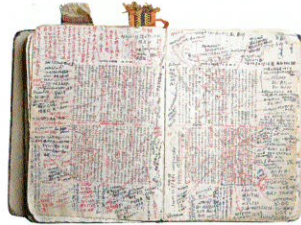
It exhibits the philosophy and history of Seirei itself, its founders and the facilities of the Seirei group with articles on display and screen images.

Information of the museum

① Origin of Seirei

The painting "Christ washing Peter's feet" on the wall at the front entrance shows the part in John Chapter 13 where Jesus Christ, realizing he was to be executed, got up from the table, took off his outer garments, wrapped a towel around his waist and poured water into a basin. He then began to wash the disciples' feet, wiping them with the towel he was wearing. After putting on his outer garments again and sitting down he said, "If I, then, the Lord and Master, have washed your feet, you must wash each other's feet."

The Bibles that Tamotsu Hasegawa, the founder, and his wife, Yaeko, used regularly are exhibited at the entrance.



The Bible that Tamotsu Hasegawa used

② Seirei History Zone

This zone introduces the progress of Seirei from 1926 to the birth of each Seirei group. The history of Seirei is divided into four different periods: "Predawn Period", "Start-up Period", "Turbulent Period" and "Blooming Period."



③ Seirei Phylogenetic Tree

Seirei group's work emerged from the church. The figure shows that it branches out strongly toward the medical, welfare and education fields, with leaves out and coming into bearing while sharing the same philosophy.

④ Turning Point of Seirei

The latest motion control devices inform visitors of the turning points in Seirei group right up to the present date.

⑤ Seirei Group Zone

This zone introduces the work of Seirei's main organizations including SEGO and welfare facilities in India and Brazil.

SEIREI GROUP



THE UNITED CHURCH OF CHRIST IN JAPAN ENSHU EIKO CHURCHES
 SEIREI SOCIAL WELFARE COMMUNITY
 NISSAY SEIREI HEALTH AND WELFARE FOUNDATION
 JAPAN SENIOR CITIZENS WELFARE ORGANIZATION
 JYUJI-NO-SONO SOCIAL WELFARE ORGANIZATION
 KOHITSUJI-GAKUEN SOCIAL WELFARE ORGANIZATION
 THE KOBE SEIREI SOCIAL WELFARE COMMUNITY
 MAKINOHARA YAMABATO-GAKUEN SOCIAL WELFARE ORGANIZATION
 SAKUMA SOCIAL WELFARE ORGANIZATION
 SEIAI-KAI MEDICAL ORGANIZATION
 FUYO-KYOKAI MEDICAL ORGANIZATION
 HAMAMATSU DEACONISSE MOTHER HOUSE
 KEIAI-KAI MEDICAL ORGANIZATION
 SHOKEI-KAI SOCIAL WELFARE ORGANIZATION
 more than 300 facilities throughout Japan

OVERSEAS

SOCIAL WELFARE INCORPORATED ORGANIZATION IN BRAZIL : CASA DA ESPERANCA
 SEIREI ASHA BHAVAN : SEIREI HOME OF HOPE IN INDIA

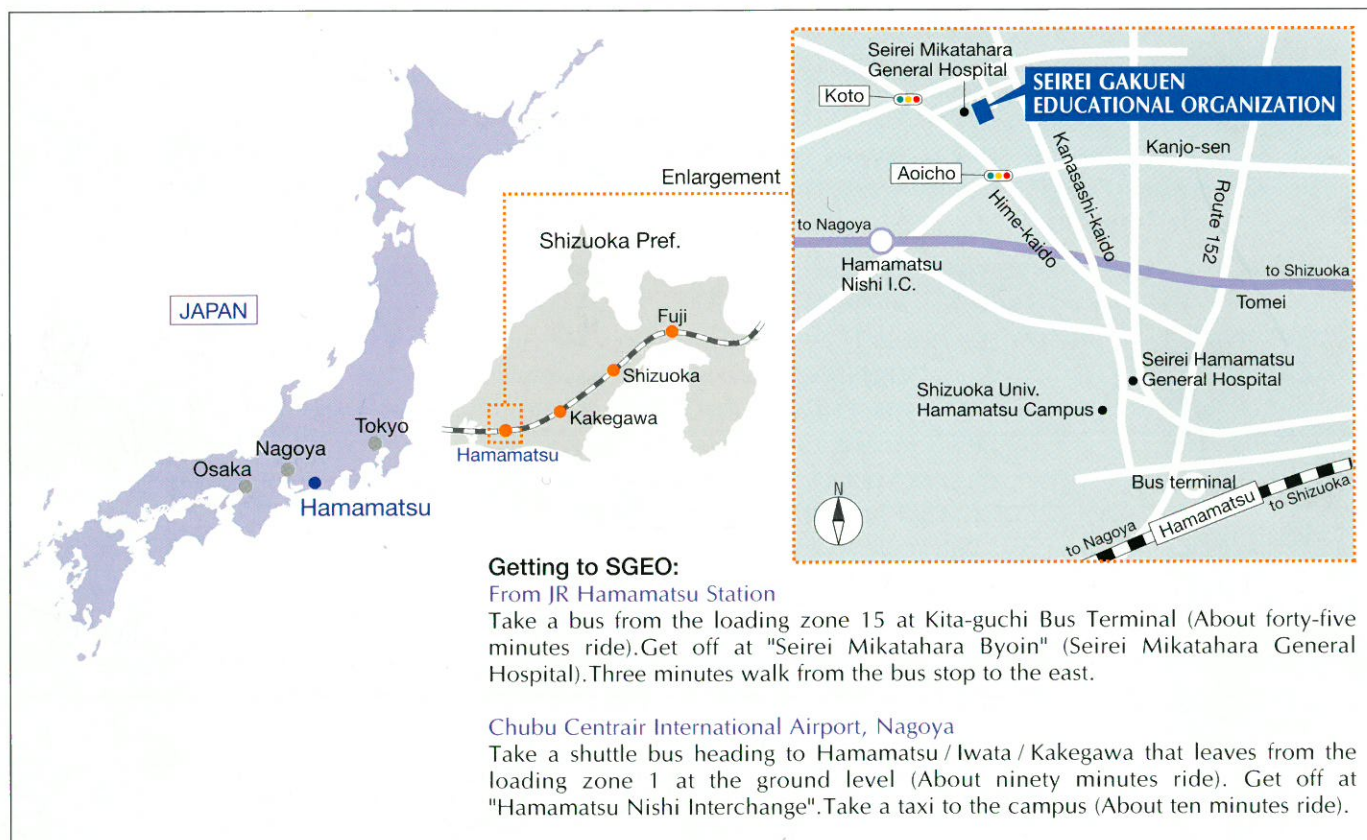




SEIREI CHRISTOPHER

Origin of CHRISTOPHER

The meaning of "Christopher" is "Christ carrier" and it is the name of a semi-legendary martyr in the mid 3rd century. According to the legendary story, one day he carried a little boy across the river without knowing this holy boy was the incarnation of Christ. Tamotsu Hasegawa, the founder of Seirei, named our educational institutions "Seirei Christopher" as he hoped that the graduates of our educational institutions would care for all the people who are ill, disabled, or elderly by understanding anxieties, pains, and griefs of those people, like Christopher did when he carried Christ on his shoulders.



学校法人 聖隷学園
 SEIREI GAKUEN EDUCATIONAL ORGANIZATION

Seirei Gakuen Educational Organization

3453 Mikatahara-cho, Kita-ku, Hamamatsu-shi, Shizuoka 433-8558, Japan
 Phone / +81-53-436-5311 Fax / +81-53-436-5355
 URL / <http://www.seirei.ac.jp> E-mail / general-dept@seirei.ac.jp