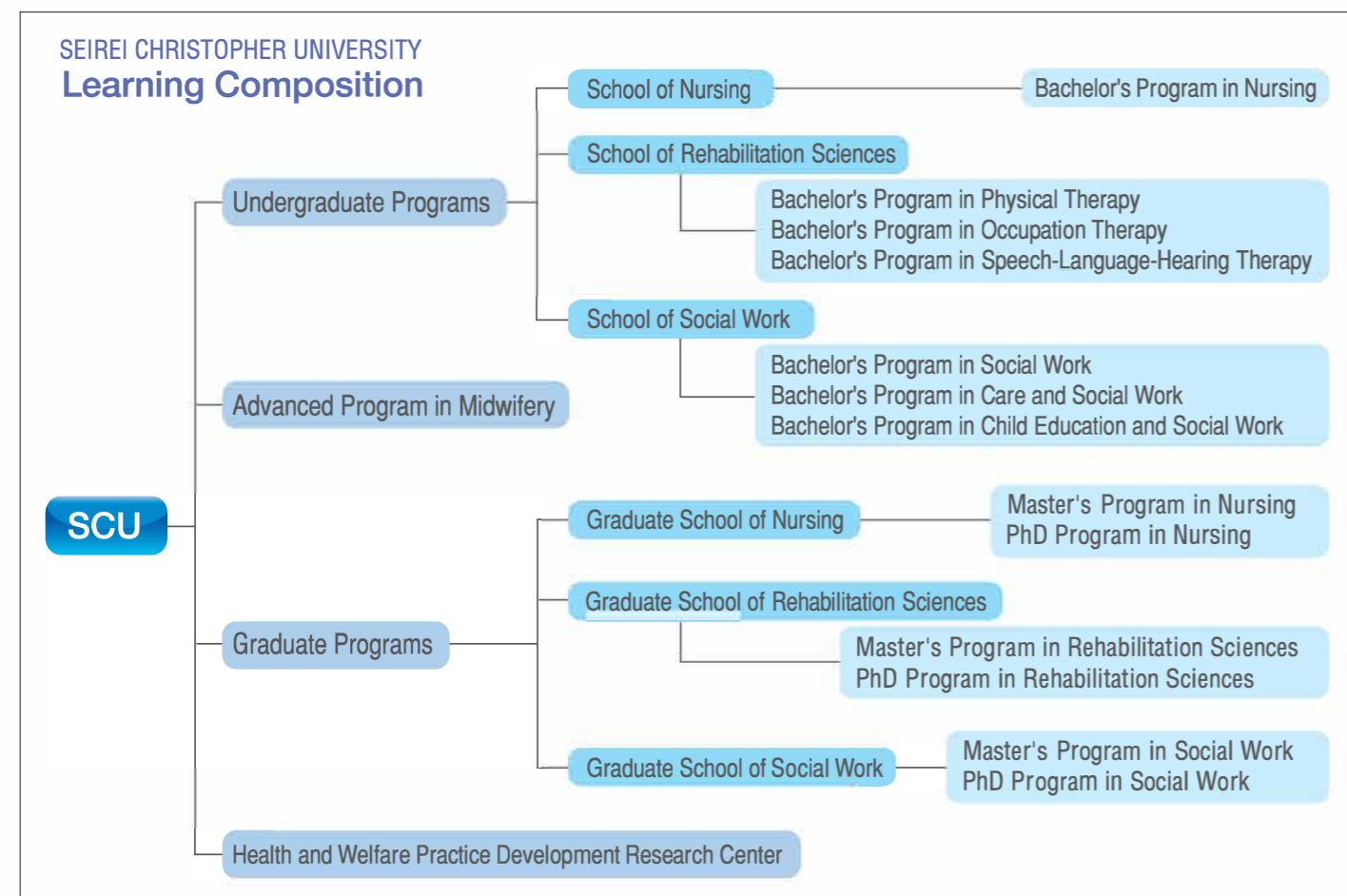


We nurture students to gain professional expertise in the areas of healthcare and social work, embracing the dignity of life and the philosophy of "Love Thy Neighbor."

Based on the principles of SCU "Love Thy Neighbor" and "Dignity of Life", since its inception, SCU has helped nurture professionals with not only the relevant knowledge and skills, but also passion for hands on practice in the fields of healthcare and social work based upon biblical foundations. Philosophy and history as well as the principles of Seirei are compulsory areas of study for all students enrolled in the School of Nursing, the School of Rehabilitation Sciences and the School of Social Work. With a view to realizing their respective future professions, students initially pursue their studies in fundamental courses before progressing into more specialized courses. Students also learn the meaning, importance and way of "Inter-Professional Working", a corporative method among specialists in different fields working as a team, while pursuing the higher level of their specialty studies. Students are able to acquire practical skills through practice at Seirei's extensive facilities which share the same Christian ethics and provide optimal learning opportunities. The ultimate educational objective of SCU is to develop students who will go on to become healthcare professionals and in turn, provide care through the ethic of "Neighborly Love" and have compassion for the pain of others as well as a passion for working with those in other healthcare and social work professions, both at home and abroad.



SEIREI CHRISTOPHER UNIVERSITY

School of Nursing Bachelor's Program in Nursing First year Enrollment Limit: 150

Seirei Christopher University (SCU) holds that the most fundamental skill and spirit of nursing is to protect the dignity of life and to show love to those who need help. The SCU nursing program emphasizes the sensibility to understand the feelings of people in need of medical care, human nature, and the joy of life. The program emphasized critical thinking skills with an emphasis on thinking across disciplines and thinking objectively. SCU nursing graduates must also demonstrate a mastery of nursing skills and knowledge. Seirei seeks to train nurses who have mastered the discipline and who aim to practice skilled nursing with a warm heart.



School of Rehabilitation Sciences

Bachelor's Program in Physical Therapy First year Enrollment Limit: 40

The Seirei Physical Therapy (PT) Department of the School of Rehabilitation Sciences trains Physical Therapists to work with patients who have challenging illnesses or injuries which have led to loss of independence in their daily lives. Our Physical Therapists, with great sympathy and commitment of the heart, work with patients who have experienced loss of the ability to sit, stand, walk, etc. At the same time, Seirei PTs seek to develop in our patients, positive feelings in order to help prevent further physical deterioration of their disability. We train Physical Therapists who are committed to supporting exercise therapy based on scientific evidence which supports an independent daily life for their patients.



Bachelor's Program in Occupation Therapy First year Enrollment Limit: 30

The Seirei Occupational Therapy (OT) Department of the School of Rehabilitation Sciences trains Occupational Therapists who are committed to restoring the daily living skills and functions that are a part of independent living. Our Occupational Therapists are committed to overcoming disabilities of the body and mind using the most advanced scientific approaches and skills. At Seirei Christopher University we seek to educate Occupational Therapists to achieve the highest level of critical thinking in their clinical practice, and who have a calm judgement, and who are skilled at developing and implementing therapeutic plans which alleviate human pain and restore quality of life.



Bachelor's Program in Speech-Language-Hearing Therapy First year Enrollment Limit: 25

The Seirei Speech Therapy (ST) Department of the School of Rehabilitation Sciences emphasizes education and conducts research to maintain and improve speech, language, and hearing functions so that people with communication difficulties can both communicate and eat with no loss of their individual dignity. Through education, our students learn to support patients in building a richer life. At Seirei Christopher University, we train Speech, Language, and Hearing professionals who develop a rich and deep understanding of human nature. Our graduates are highly skilled at working in the most creative and effective ways possible with the patients who present themselves for therapy.



School of Social Work

Bachelor's Program in Social Work First year Enrollment Limit: 40

Society faces many difficulties such as children's poverty, young-people who are "shut-ins," individuals who are isolated by disabilities, and the many challenges faced by senior citizens in a rapidly aging society. The Seirei School of Social Work seeks to develop graduates who will support these citizens-in-need and who will work to address these problems and help to build a better society. The Seirei School of Social Work's response to these challenges is to train Social Workers who will not only be active in the social welfare sector, but who will also excel in the medical, educational, judicial, and regional support fields.



Bachelor's Program in Social Work First year Enrollment Limit: 25

In the Seirei Christopher University Care Work program, students learn both the theories and practical skills to serve and support people with disabilities, as well as the family who serve as caregivers in everyday life. The Seirei program nurtures our graduates to become Care Worker professionals who support others in living a happy life. This is done through students mastering specialized knowledge and skills in addition to developing empathy for those members of humanity in need. This is the foundational value of all of Seirei.



Bachelor's Program in Child Education and Social Work First year Enrollment Limit: 40

A key social problem is that family stress has greatly increased. This leads to an unhealthy family environment, child-raising anxiety, and even child abuse. In addition to high quality education, high quality and affordable childcare, and high quality education for children, families also need support for parents. This calls for highly qualified and responsible professionals who can take responsibility for creating a nurturing environment in which healthy children can be raised. In the Child Education and Social Work department our goal is to nurture professional leaders who can comprehensively support the creation of healthy and safe environments in which to raise children.



Advanced Program in Midwifery

Enrollment Limit: 15

The Advance Program in Midwifery is designed for professionals who want to become Midwives and enter this service sector. This program is truly designed in the spirit of love for one's neighbor. Our Advance Midwifery program is based on a deep belief in the inner power of women, faith in women, their strength, and the centrality of their love for family and the wonder of the "life cycle." The Seirei Advanced Midwifery program cultivates professionals who place their emphasis on care and support. In addition to the educational goals of developing graduates with judgement, world-class education, and practical skills, we emphasize the ability to continue to deliver care to women, their families, and their children. This program nurtures the central concept of the ability of women to promote women's rights and the anonymous role of the midwife. We nurture the ability of our graduate to act as professionals in an independent manner.



GRADUATE PROGRAMS

Master's Programs 2 years (3 years for long-term school course)

PhD Programs 3 years (4 years for long-term school course)

Our masters and doctoral courses in nursing, rehabilitation sciences, and Social Welfare aim to cultivate highly qualified world-class professionals. These post-graduate courses offer the most advanced graduate-level research opportunities and focus on the broadest range of academic development. Our programs are flexible and we are able to address a wide range of academic and research interests.



Master's Program in Nursing Enrollment Limit: 10 / **PhD Program in Nursing** Enrollment Limit: 5

The Seirei Christopher University graduate nursing programs address the need for professionals with greater skills in the face of accelerating sophistication and specialization in the field of nursing. Our masters and PhD programs in nursing address four fields of study: environmental support nursing, life support nursing, medical support nursing, and family support nursing. In 2015, the Master's program was accredited and includes courses such as cancer nursing and advance practical nursing. The doctoral program is a highly specialized course for nursing professionals and is focused on multi-sectoral collaboration. Students work on searching for and developing methodologies to improve the quality of life (QOL) for patients in response to their real-world needs.

Master's Program in Rehabilitation Sciences Enrollment Limit: 10 / **PhD Program in Rehabilitation Sciences** Enrollment Limit: 5

As the composition of our society and population change, we also need health care and social welfare reform. The practice of Rehabilitation sciences becomes equally complex and diversified and requires the same degree of change and development. The Seirei Christopher University Graduate School of Rehabilitation Science consist of three fields: Physical Therapy, Occupational Therapy, and Speech, Language, and Hearing Therapy. In order to contribute to the social and medical demands of a rapidly changing society, our Rehabilitation Science courses also develop in specialization and related fields. Graduates learn critical thinking skills, problem solving, and deepening of their specialized knowledge. Our graduates develop into highly qualified professionals with outstanding communication skills and refined research capabilities.

Master's Program in Social Work Enrollment Limit: 10 / **PhD Program in Social Work** Enrollment Limit: 3

There have been significant changes in both peoples' awareness of social welfare and in the accompanying social and economic circumstances across society. It is expected that social welfare service must cover peoples' entire lives and plays a significant role in helping individuals maintain social stability and wellbeing. The programs of the Seirei Christopher University Social Welfare Graduate School are the first to have been developed in Shizuoka Prefecture and remains the only graduate school focused on social welfare, child and family welfare, and nursing care welfare. These graduate programs reconcile the fields of social welfare and professional education. Our programs also advance professionals who play key roles in seeking the integration of these fields, while at the same time pursuing higher levels of specialty.

